

"CONCOURSE QUALITY, HOBBYIST PRICE"



DELUXE REPORT



Proud to display this symbol

Copyright Kevin Marti 2007

12007 W. PEORIA AVENUE  
EL MIRAGE, AZ 85335  
(623) 935-2558  
(623) 935-2579 Fax

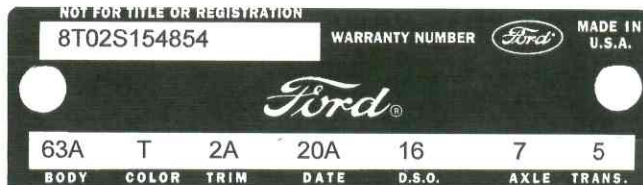
Thank you for your interest in our services. We have determined the following information for your car from the Ford Database we have:

VEHICLE ORDER IMAGE

12345678901234567890123456789012345678901234567890123456789012345678901234567890  
8T02S154854 T 2A 1 20A4961 8AMA 652 F2 1 2 2 166413 B

DOOR DATA PLATE INFORMATION

Serial Number 8T02S154854  
8 1968  
T Built at Metuchen  
02 Mustang Fastback  
S 390-4V  
54,854th Ford vehicle scheduled for production at Metuchen  
63A Mustang Fastback  
T Candyapple Red Paint, Ford #2008-A  
2A Black Standard Bucket Seats  
20A Scheduled For Build: January 20, 1968  
16 Philadelphia Ordering District  
7 3.25 standard axle ratio  
5 Four-Speed Wide Ratio Manual Transmission



ORDER TYPE RETAIL  
DSO ITEM #: 4961  
DEALER#: 16G413  
GOOD BROTHERS

OTTSVILLE PA 18942

Your vehicle was ordered with the following options:

- GT Equipment Group
- Four-Speed Wide Ratio Manual Transmission
- F70X14 Wide Oval Tires
- White Sidewall Nylon Tires
- Power Disc Brakes
- AM Radio
- Tinted Glass

IMPORTANT DATES:

ORDER RECEIVED: 01/08/68  
CAR SERIALIZED: 01/11/68  
BUCKED: 01/16/68  
SCHEDULED FOR BUILD: 01/20/68  
ACTUALLY BUILT: 01/19/68  
RELEASED: 01/22/68  
SOLD: 01/31/68

STATISTICS

Your car was one of:  
5,623 With this Paint Code  
2,247 With these Paint/Trim Codes  
4,113 With these Engine/Transmission Codes  
1,246 Ordered from this DSO  
12,087 With GT Equipment Group  
For the 1968 Mustang Fastback.

Your car was actually produced on January 19, 1968 -- one day ahead of schedule.

*Kevin Marti*  
Kevin Marti